

Local Climatological Data
Champaign-Urbana, IL - 118740
August 2000

Illinois State Water Survey
Water Survey Research Center

DATE Corn	TEMPERATURE			PRECIP (in)	SNOW (in)		WEATHER TYPES	WIND				SKY DEGREE DAYS			
	Max	Min	Mean	Amnt	Depth	Dir		Speed	Peak	Gust	Dir	COVER	Heat	Cool	
1	87	64	76	0.00	0.0	0		W	6.0	17.7	W	PC	0	11	25
2	89	66	78	0.48	0.0	0	TRW+	SW	6.1	18.9	NW	PC	0	13	26
3	78	61	70	0.00	0.0	0		NE	3.9	12.5	N	PC	0	5	20
4	80	59	70	0.00	0.0	0		NE	2.9	11.4	N	PC	0	5	20
5	76	57	67	0.26	0.0	0	TRW	S	5.5	15.6	S	CLDY	0	2	17
6	86	70	78	0.02	0.0	0	TRW-	SW	6.1	19.2	SW	CLDY	0	13	28
7	86	67	77	0.02	0.0	0	RW-,F	SW	4.2	15.6	SW	PC	0	12	27
8	83	69	76	0.05	0.0	0	RW-	SW	5.9	17.7	S	PC	0	11	26
9	90	70	80	0.00	0.0	0		NW	4.5	14.8	W	PC	0	15	28
10	85	64	75	0.00	0.0	0		N	2.4	11.7	NE	CLR	0	10	25
11	87	62	75	0.00	0.0	0		NE	3.1	15.2	N	PC	0	10	24
12	84	60	72	0.00	0.0	0		NE	2.1	8.2	SE	CLR	0	7	22
13	81	59	70	0.00	0.0	0		S	2.5	11.8	S	PC	0	5	20
14	89	59	74	0.00	0.0	0		S	4.0	15.5	S	CLR	0	9	23
15	94	67	81	0.00	0.0	0		SW	5.3	16.1	SW	CLR	0	16	27
16	85	65	75	0.00	0.0	0		NE	3.8	12.0	N	CLR	0	10	25
17	97	62	80	0.30	0.0	0	TRW	SE	5.5	18.5	W	PC	0	15	24
18	80	62	71	0.01	0.0	0	RW-	N	4.5	15.2	N	CLDY	0	6	21
19	76	59	68	0.00	0.0	0		NE	3.0	12.1	NE	CLR	0	3	18
20	78	58	68	0.00	0.0	0		E	2.6	12.6	SE	CLR	0	3	18
21	84	55	70	0.00	0.0	0		S	3.4	13.6	S	PC	0	5	20
22	84	67	76	0.19	0.0	0	TRW	S	4.9	18.0	S	PC	0	11	26
23	86	65	76	1.84	0.0	0	TRW+,TRW-,RW-	SW	5.1	22.6	NW	PC	0	11	26
24	85	61	73	T	0.0	0	RW-	NE	2.5	10.2	W	PC	0	8	23
25	85	59	72	0.00	0.0	0		SE	2.4	11.0	SE	CLR	0	7	22
26	83	61	72	0.15	0.0	0	TRW	S	4.2	16.2	S	CLDY	0	7	22
27	82	64	73	0.00	0.0	0		E	1.8	7.6	E	CLDY	0	8	23
28	80	65	73	0.27	0.0	0	TRW-,RW-	SE	3.3	12.9	S	CLDY	0	8	23
29	96	67	82	0.00	0.0	0		SE	3.3	9.0	S	CLR	0	17	27
30	93	70	82	0.00	0.0	0	F	SE	3.1	10.9	S	PC	0	17	28
31	92	66	79	0.00	0.0	0	F	SE	2.8	11.6	SE	CLR	0	14	26
AVG/TOT	85.2	63.2	74.2	3.59	0.0			NE	3.9			0	294	730	
DEP.	+2.2	+0.8	+1.5	-0.44	0.0			SW	-0.8			-7	+56	+51	

NUMBER OF DAYS and DEPARTURE

	MAX TEMP				MIN TEMP				PRECIPITATION				SNOW	SKY COVER		
	>=90	<=32	<=32	<=0	>T	>=.01	>=.10	>=.50	>=1.00	>=1.0	CLR	PC	CLDY			
TOTAL	6	0	0	0	12	11	7	1	1	0	10	15	6			
DEP	+2	0	0	0	+2	+1	-2	0	0	0	0	+3	-3			

	WEATHER TYPES										SEASONAL DEGREE DAYS			PRECIPITATION	
	R	L	S	Z	IP	A	T	F	D	H	BS	HEATING	COOLING	CORN	JAN-August
TOTAL	12	0	0	0	0	0	8	3	0	0	0	0	809	2927	25.23
DEP	+1	-1	0	0			+3	-3				-9	-30	+163	-2.34

Averages based on 1961-1990 data. The daily sky condition is determined by the prevailing sky condition of three observations made between 7am and 7pm LST. Snow depth at 7am LST. All other data midnight-midnight. M = Missing

WEATHER TYPES:

=Trace

R = Rain Z = Freezing rain/drizzle D = Dust
L = Drizzle IP = Sleet H = Haze
S = Snow A = Hail BS = Blowing
T = Thunder F = Fog RW = Rainshower SW = Snowshower

PRECIP INTENSITY: - Light Precip amount "T"

Moderate
+ Heavy

DEGREE DAYS: Heat and Cool base 65F. Corn Growing base 50F, ceiling 86F. Heating DD season July-June. Cool and Corn DD season January-December.

The daily climate statistics are available by touch-tone phone. Call 333-8890 and select menu option 1. The recording is updated daily Monday through Friday by 8:00 a.m. For this and other climate data, visit the State Climatologist Web site at <http://www.sws.uiuc.edu/atmos/statecli/>

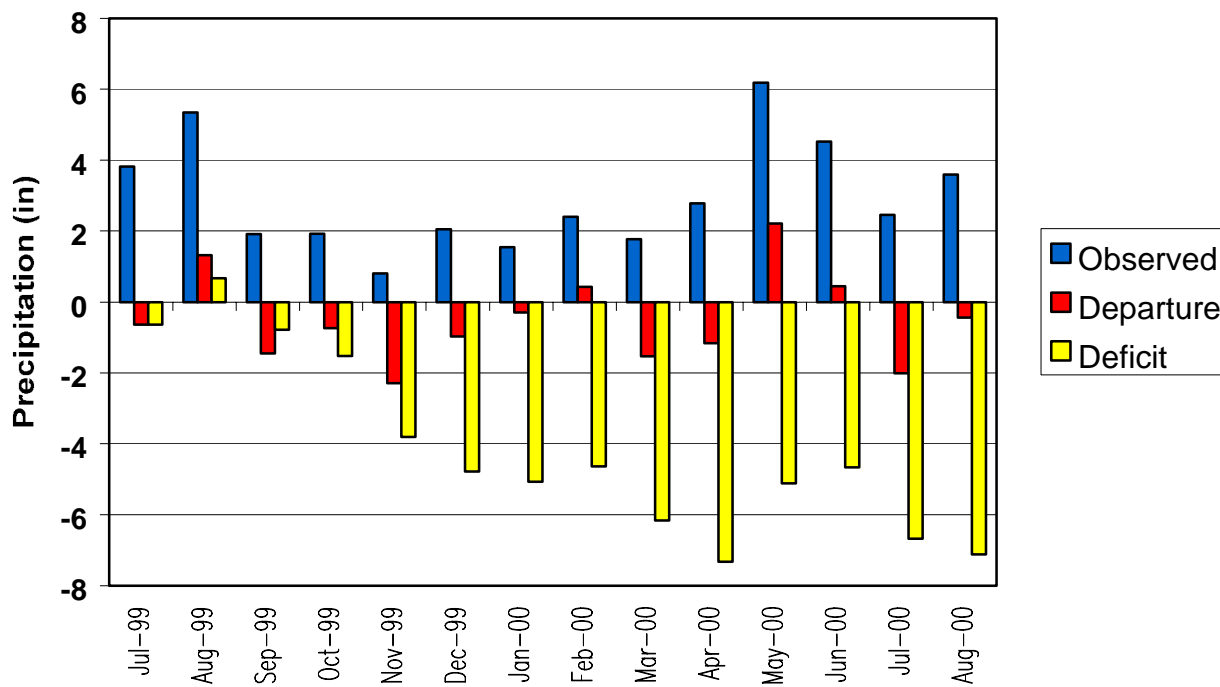
Champaign-Urbana Weather Highlights – August 2000

ILLINOIS STATE WATER SURVEY

2204 Griffith Dr.
Champaign, IL 61820
wxobsrvr@sws.uiuc.edu

Champaign-Urbana finally experienced its first 90°F day on August 9th. This is the latest date in the summer for this since the records began in 1888. The heaviest rainfall of the month occurred on August 23 (1.84"). Most of that rain fell in 2 hours, a once in two-year event. The figure below shows the monthly rainfall, its departure from average, and the accumulated deficit since July of last year. While we have been significantly above average in May and slightly above average in February and June, we are still below average for the year 2000.

Champaign-Urbana



JRA

The daily climate statistics are available by touch-tone phone. Call 333-8890 and select menu option 1. The recording is updated daily Monday through Friday by 8:00 a.m. For this and other climate data, visit the State Climatologist Web site at <http://www.sws.uiuc.edu/atmos/statecli/>