

Local Climatological Data
Champaign-Urbana, IL - 118740

Illinois State Water Survey
Water Survey Research Center

November 2003

DATE	TEMPERATURE			PRECIP (in)	SNOW (in)		WEATHER TYPES	WIND				SKY COVER	DEGREE DAYS	
	Max	Min	Mean		Amnt	Depth		Dir	Speed (mph)	Peak Gust	Gust Dir		Heat	Cool
1	54	46	50	0.15	0.0	0	RW,RW-,F	N	2.9	13.2	N	CLDY	15	0
2	71	53	62	0.00	0.0	0	F	SW	4.0	13.9	SW	PC	3	0
3	77	57	67	0.00	0.0	0	F	S	6.0	21.0	SW	PC	0	2
4	76	51	64	0.15	0.0	0	RW-	S	8.9	25.6	SW	CLDY	1	0
5	51	37	44	0.26	0.0	0	R-	N	5.8	16.9	NW	CLDY	21	0
6	46	34	40	0.05	0.0	0	RW-	N	5.8	14.4	N	CLDY	25	0
7	44	29	37	0.00	0.0	0		N	3.0	11.8	NE	CLR	28	0
8	40	25	33	0.00	0.0	0		NE	4.8	12.7	N	CLR	32	0
9	41	23	32	0.00	0.0	0		E	2.2	9.6	SE	PC	33	0
10	58	28	43	0.07	0.0	0	RW-,L-	S	6.1	20.6	S	PC	22	0
11	62	54	58	0.19	0.0	0	RW-,L-	SW	7.8	21.9	SW	CLDY	7	0
12	65	35	50	0.01	0.0	0	L-,F	W	10.3	38.3	W	PC	15	0
13	44	27	36	0.00	0.0	0		W	6.7	19.8	NW	CLR	29	0
14	44	25	35	0.01	0.0	0	RW-	SW	6.5	17.7	SW	PC	30	0
15	44	37	41	0.10	0.0	0	R-,L-	S	7.1	17.1	S	CLDY	24	0
16	57	39	48	0.03	0.0	0	L-,F	S	3.7	14.1	W	CLDY	17	0
17	58	40	49	0.42	0.0	0	R,RW-,L-,F	SE	7.4	17.5	S	CLDY	16	0
18	63	50	57	2.45	0.0	0	R+,R,RW+	S	9.9	32.0	S	CLDY	8	0
19	58	39	49	0.00	0.0	0		W	8.1	26.5	W	CLR	16	0
20	66	35	51	0.00	0.0	0		S	7.3	19.2	S	CLR	14	0
21	63	41	52	0.00	0.0	0		SE	2.9	10.6	SW	CLR	13	0
22	67	44	56	0.00	0.0	0		S	6.8	20.2	S	PC	9	0
23	63	31	47	0.92	T	0	R+,R-,IP-	S	12.9	28.5	S	CLDY	18	0
24	32	22	27	T	T	T	SW-	W	12.1	31.5	W	CLDY	38	0
25	39	25	32	0.00	0.0	0		S	9.0	23.0	S	PC	33	0
26	49	31	40	0.09	0.0	0	RW-	SE	4.5	14.2	SE	PC	25	0
27	49	38	44	T	0.0	0	L-,F	NW	4.2	15.7	N	CLDY	21	0
28	38	25	32	0.04	0.3	0	SW-	NW	9.8	26.6	W	CLDY	33	0
29	39	22	31	0.00	0.0	T		SW	10.7	24.1	S	PC	34	0
30	54	34	44	0.00	0.0	0		SW	9.2	22.1	NW	CLR	21	0
AVG/TOT	53.7	35.9	44.8	4.94	0.3			S	6.9				601	2
DEP.	+4.1	+2.9	+3.5	+1.49	-1.8			S	-0.4				-110	+2

NUMBER OF DAYS and DEPARTURE

	MAX TEMP				MIN TEMP				PRECIPITATION					SNOW	SKY COVER		
	>=90	<=32	<=32	<=0	>T	>=.01	>=.10	>=.50	>=1.00	>=1.0	CLR	PC	CLDY				
TOTAL	0	1	12	0	17	15	8	2	1	0	7	10	13				
DEP	0	-1	-3	0	+5	+2	0	0		-1	0	+2	-2				
	WEATHER TYPES											SEASONAL DEGREE DAYS		PRECIPITATION			
	R	L	S	Z	IP	A	T	F	D	H	BS	HEATING	COOLING	JAN-November			
TOTAL	12	7	2	0	1	0	0	7	0	0	0	1024	866	36.87			
DFF	+3	+2	-2	-1			-1	+3	■	■	■	-118	-120	-1.42			

Averages based on 1971-2000 data. The daily sky condition is determined by the prevailing sky condition of three observations made between 7am and 7pm LST. Snow depth at 7am LST. All other data midnight-midnight. M = Missing

WEATHER TYPES:

R = Rain Z = Freezing rain/drizzle D = Dust
L = Drizzle IP = Ice pellets (sleet) H = Haze
S = Snow A = Hail BS = Blowing snow
T = Thunder F = Fog RW = Rainshower SW = Snowshower

PRECIP INTENSITY

- Light Precip amount "T" =Trace
Moderate
+ Heavy

DEGREE DAYS Heat and Cool base 65F. Corn Growing base 50F, ceiling 86F. Heating DD season July-June. Cool and Corn DD season January-December.

Champaign-Urbana Weather Highlights – November 2003

ILLINOIS STATE WATER SURVEY

Maria Peters, Weather Observer
2204 Griffith Drive
Champaign, IL 61820
wxobsrvr@sws.uiuc.edu

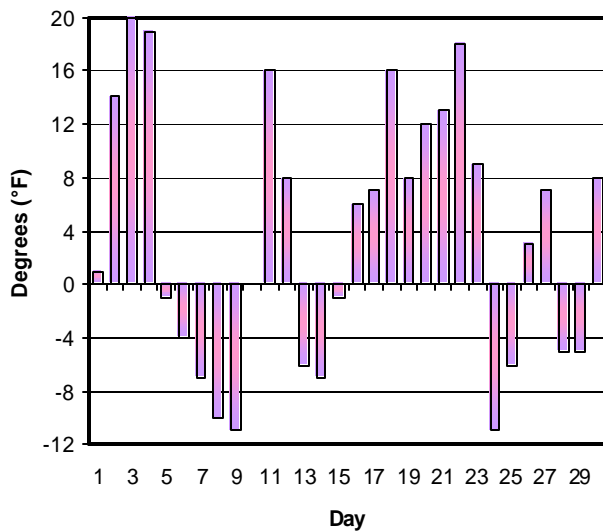
November 2003 ended as the 12th warmest November since 1888, and despite daily temperatures at times more than 15 degrees above average, no new temperature records were set during the month.

This November was rather rainy, with precipitation occurring more than half the days of the month. A new record was set

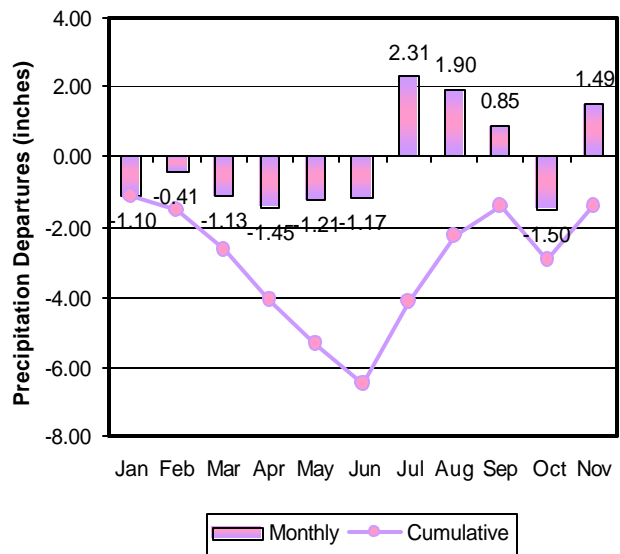
- ◆ on November 18th, when Champaign-Urbana received 2.45 inches. This flooded the old record of 2.25" that had been set for November 18th in 1921.

November 2003 was the 8th wettest November on record, although it was tied for 4th for the lowest snowfall. The snowfall rankings are somewhat misleading as 34 years are tied for the lowest measurable snowfall with zero.

November 2003 Mean Daily Temperature Departure from Normal



2003 Monthly Precipitation Departures from Normal



MCP

The daily climate statistics are available by touch-tone phone. Call 333-8890 and select menu option 1. The recording is updated daily Monday through Friday by 8:00 a.m. For this and other climate data, visit the State Climatologist web site at <http://www.sws.uiuc.edu/atmos/statecli/>